



## SDGs In Focus: Goal 15

**Yuxi Zhang**

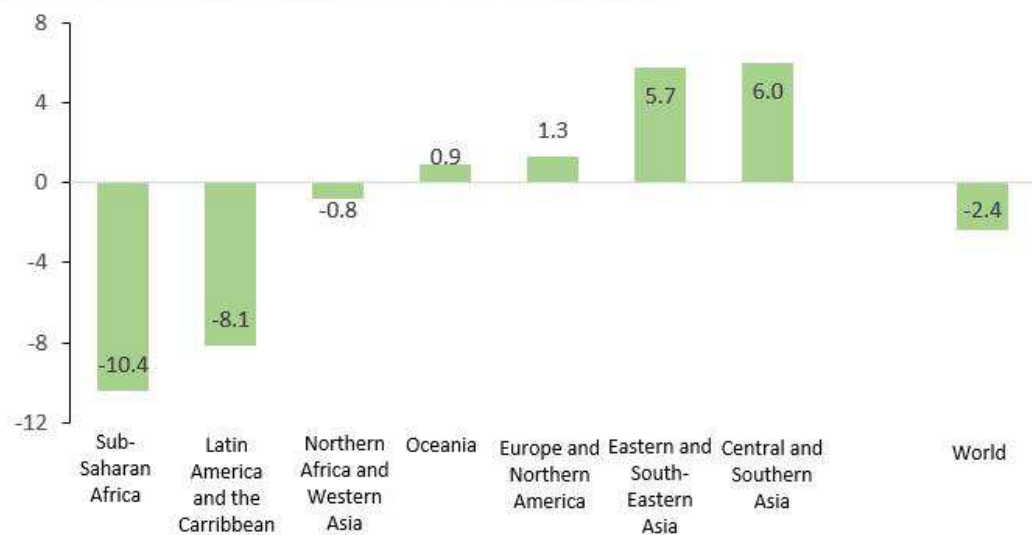
UN DESA/Statistics Division

11 July 2022

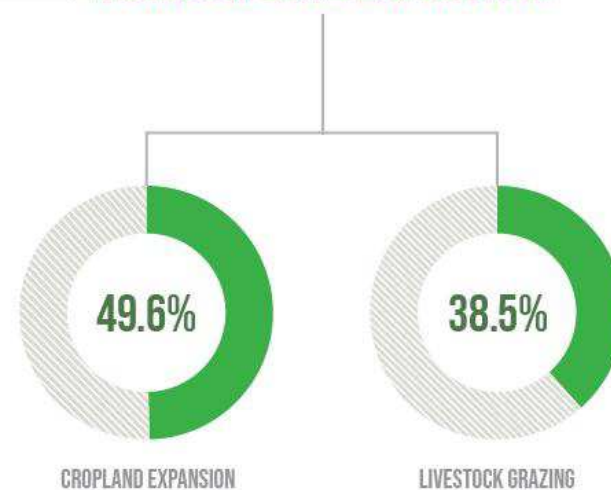
# Life on land

The world's forest area continues to shrink, mainly due to agricultural expansion

Change of forest area coverage, 2000-2020 (percentage)



ALMOST **90%** OF GLOBAL DEFORESTATION IS DUE TO **AGRICULTURAL EXPANSION**

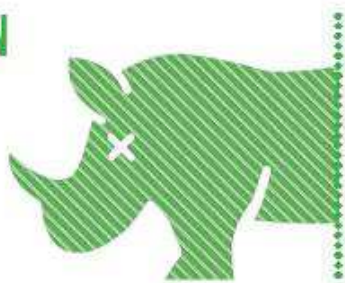




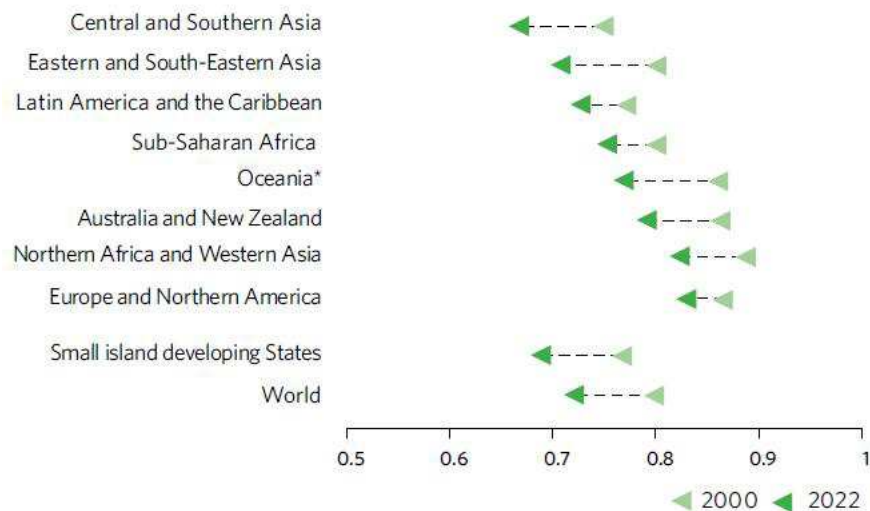
# Life on land

## The risk of species extinction continues to rise and is highest in Asia and small island developing States

AROUND **40,000 SPECIES**  
ARE DOCUMENTED  
TO BE AT RISK  
OF EXTINCTION  
OVER THE  
COMING  
DECADES



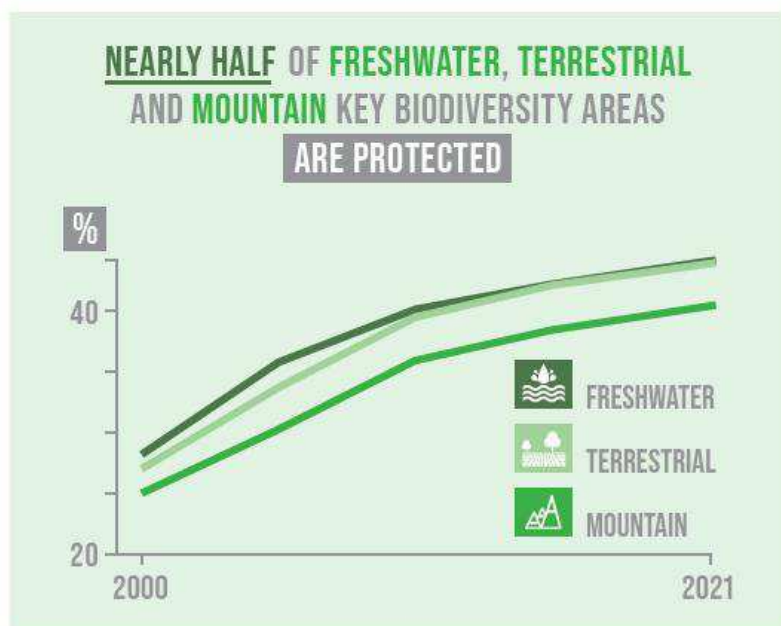
Red List Index of species survival, 2000 and 2022



\*Excluding Australia and New Zealand.

## Life on land

**Nearly half of areas identified as key for global biodiversity are under protection, though progress lags in four regions**



Globally, the mean percentage coverage of **key biodiversity areas** by protected areas **increased** from over one quarter in 2000 to **nearly one half** in 2021.

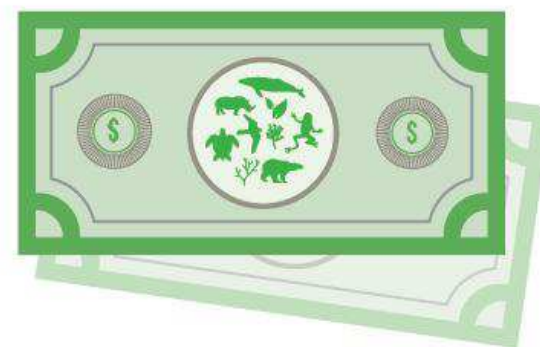


## Life on land

National planning processes are increasingly reflecting the **value of biodiversity**, still progress is **too slow**

By January 2022, **37%** of countries assessed are on track to **achieve or exceed their national targets of biodiversity**; **58%** have made progress towards their targets but at **an insufficient rate**.

**BIODIVERSITY**  
**IS LARGELY NEGLECTED**  
IN COVID-19 RECOVERY SPENDING





Learn more in Report: **Available now!**

<https://unstats.un.org/sdgs/report/2022>

## The Sustainable Development Goals Report 2022



Photo | © WFP/Sayed Asif Mahmud